

	ACROSS-THE-LINE	PART WINDING	AUTO TRANSFORMER	SOFT START SOFT STOP	PRIMARY RESISTOR	WYE-DELTA CLOSED TRANSITION	WYE-DELTA OPEN TRANSITION
MODEL NUMBER	GPA	GPP	GPR	GPS	GPV	GPW	GPY
VOLTAGE	FULL	REDUCED	REDUCED	REDUCED	REDUCED	REDUCED	REDUCED
TYPICAL VOLTAGE APPLIED MOTOR STARTING	100%	100%	65%	30% (adjustable)	70%	100%	100%
INRUSH CURRENT	6 X NORMAL LOAD CURRENT	60% OF NORMAL WITH 1 ST WINDING	42% OF NORMAL	30% (adjustable)	50% OF NORMAL	33% OF NORMAL	33% OF NORMAL
STARTING TORQUE	100%	48%	42%	30%	50%	33%	33%
MOTOR TYPE	STANDARD	SPECIAL	STANDARD	STANDARD	STANDARD	SPECIAL	SPECIAL
# OF WIRE CONNECTIONS	3 WIRE	6 WIRE	3 WIRE	3 WIRE	3 WIRE	6 WIRE	6 WIRE

Based on NEMA B type motors.

GPx HP / Voltage / Short Circuit Withstanding Rating

Voltage	208V to 480V 60Hz		220V to 240V 60Hz		380V to 416V 50Hz / 60Hz		440V to 480V 60Hz		575V to 600V 60Hz	
	Normal Power	Alternate Power	Normal Power	Alternate Power	Normal Power	Alternate Power	Normal Power	Alternate Power	Normal Power	Alternate Power
Withstand Rating (short circuit current)	Standard 100kA				Optional 150kA				Standard 50kA Optional 100kA	
HP (kw)	5-150 (3.7 - 110)		5-150 (3.7 - 110)		5-150 (3.7 - 110)		5-150 (3.7 - 110)		5-150 (3.7 - 110)	
	200 (147)		250 (184)		350 (257) - 450 (295)		500 (355)		500 (355)	

Full Service - Electric Fire Pump Controllers



Standard Features

- ViZiTouch operator interface
- NEMA 2 assembly
- Pressure and event recorder
- Voltage and amperage display
- Single operator for both isolating switch and circuit breaker
- Surge arrestor
- Lifting lugs
- Run test push button
- Available with automatic power transfer switch
- Emergency start handle
- Start and stop pushbuttons
- Locked rotor protector
- Phase reversal indication
- Remote start / deluge valve start provision
- Pressure transducer and run test solenoid valve externally mounted
- Gland plate
- Audible alarm
- Alarm contacts for remote indication
- Available with full voltage and reduced voltage starting

Americas

Tornatech Inc. Head Office

7075, Pl. Robert-Joncas
Suite # 132
Montreal, Canada
H4M 2Z2
Tel.: +1 514 334 0523
+1 800 363 8448
Fax: +1 514 334 5448

USA Sales Representatives

Toll Free: +1 800 363-8448
Cincinnati, Ohio
Cell: +1 513 307 6766
Birmingham, Alabama
Cell: +1 205 902 9331

Latin America Sales Representative

Tel.: +1 514 334 0523
Cell: +1 514 945 4067

Europe

Tornatech S.P.R.L.

Avenue Sabin 3
1300 Wavre
Belgium
Tel.: +32 (0) 10 84 40 01
Fax: +32 (0) 10 24 75 05

Middle East

Tornatech FZE

Warehouse RA08CC04
Jebel Ali North
PO Box 18435
Dubai,
United Arab Emirates
Tel.: +971 (0)4 887 0615
Fax.: +971 (0)4 887 0604

Asia

Tornatech Pte Ltd.

3 Soon Lee Street #05-33
Pioneer Junction
Singapore 627606
Tel.: +65 6795 8114
+65 6795 7823
Fax: +65 6795 3201



• Alarm bell



• Externally mounted pressure transducer and run test solenoid valve with protective cover



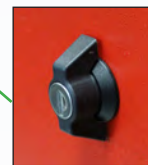
• Lifting Lugs



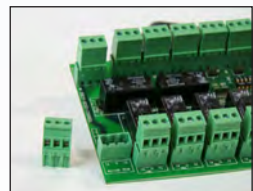
• Exterior USB Port (Interior USB port also supplied)



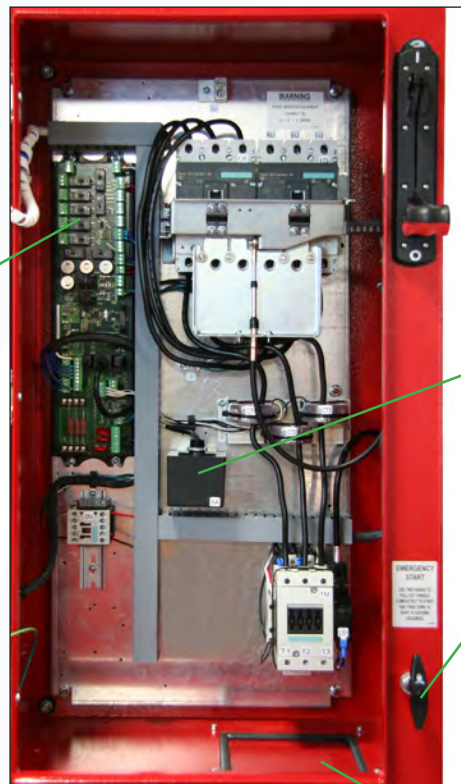
• Custom designed IS/CB operator handle



• Key lock



• Remote alarm contacts with removable terminals



• Surge arrester

• Custom designed emergency start mechanism with integrated limit switch

• GPA model shown

• Gland plate

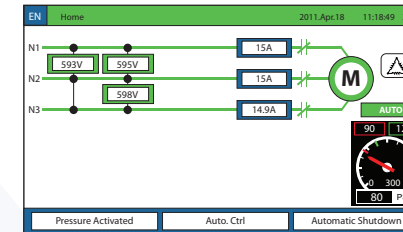


• VIZITouch operator interface

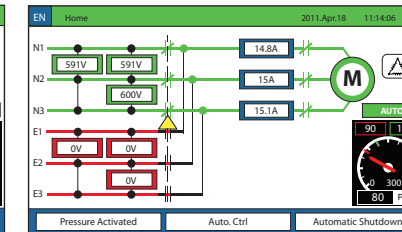


• GPW + GPU model shown

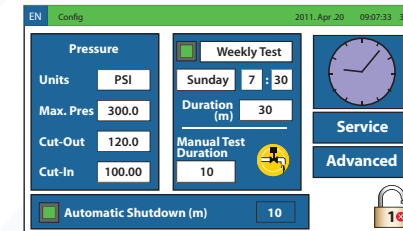
Electric Fire Pump Controller



Electric Fire Pump Controller with Transfer Switch



Settings



History/Statistics



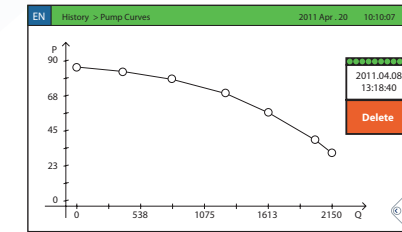
Events

Date	Time	Message
2011.07.22	14:18:20	User 9 Logger In
2011.07.22	15:59:27	Under Voltage OCCURED
2011.07.22	13:59:27	Under Voltage INACTIVE
2011.07.22	13:58:21	IO Exp1 Comm Error ACTIVE
2011.07.22	13:54:25	Alarms Resetted
2011.07.22	13:54:05	Alt. IS Tripped/Open OCCURED
2011.07.22	13:54:05	Control Voltage Returned
2011.07.22	13:54:05	User 9 Logger Off
2011.07.22	13:54:05	Alarms Resetted
2011.07.22	13:54:05	IO Tr.Sw. Comm Error OCCURED

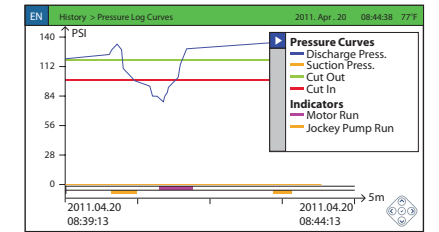
Service

info@tornatech.com
 The Americas: +1 800 363 8448, +514 334 0523
 Asia: +65 6795 8114
 Middle East: +971 508574639, Europe: +32 (0)1084 4001
 Last Pump Curve: 2011.04.08 13:18:40
 Service Done: 2011.04.20, Next On: 2011.10.20

Pump Curves



Pressure Curves



ViZiTouch major features include:

- Touch screen operation with 4.2" color display and intuitive graphics
- Expandable storage
- Multi-language
- Upgradable software
- Password protected

• Automatic power transfer switch